



Rd-03H Specification

Version V 1.0.0

Copyright ©2025

Document Resume

Version	Date	Develop/revise content	Edition	Approval
V1.0.0	2025.03.12	First edition	Qiao Rongxin	Guan Ning

Content

1. Product overview	4
1.1. Characteristic	5
2. Main parameters	6
2.1. Electrostatic Requirements	6
2.2. Electrical Characteristics	6
2.3. Radar sensing distance	7
2.4. Power consumption	7
3. Dimensions	8
4. Pin definition	9
5. Schematic	10
6. Design guidance	11
6.1. Application guide circuit	11
6.2. Radar installation notes	12
6.3. Installation environment requirements	12
6.4. Installation and sensing range	13
6.5. Power supply	15
6.6. GPIO	15
7. Storage conditions	16
8. Reflow soldering curve	16
9. Product packaging information	17
10. Contact us	17
Disclaimer and Copyright Notice	18
Notice	18
Important statement	19

1. Product overview

Rd-03H is a radar module developed by Shenzhen Ai-Thinker Technology Co., Ltd. , equipped with ICLEGEND Micro's S1KM0000 chip, a high-performance 24GHz one-transmit-one-receive antenna and peripheral circuits. S1KM0000 is an integrated single-chip millimeter wave sensor SoC based on FMCW radar transceiver technology. It uses FMCW frequency modulated continuous wave to detect targets in a set space. Combined with radar signal processing, it achieves high-sensitivity motion detection and micro-motion detection.

The Rd-03H module has a maximum sensing distance of 8m for moving human bodies. It can sense whether there are moving or slightly moving human bodies in the area and achieve real-time detection results. It provides a visual configuration tool that can easily configure the sensing distance range, sensing sensitivity in different intervals, and unattended delay time . It also supports automatic generation of detection thresholds, reduces manual debugging, improves detection accuracy, simplifies the installation process, and facilitates large-scale deployment.

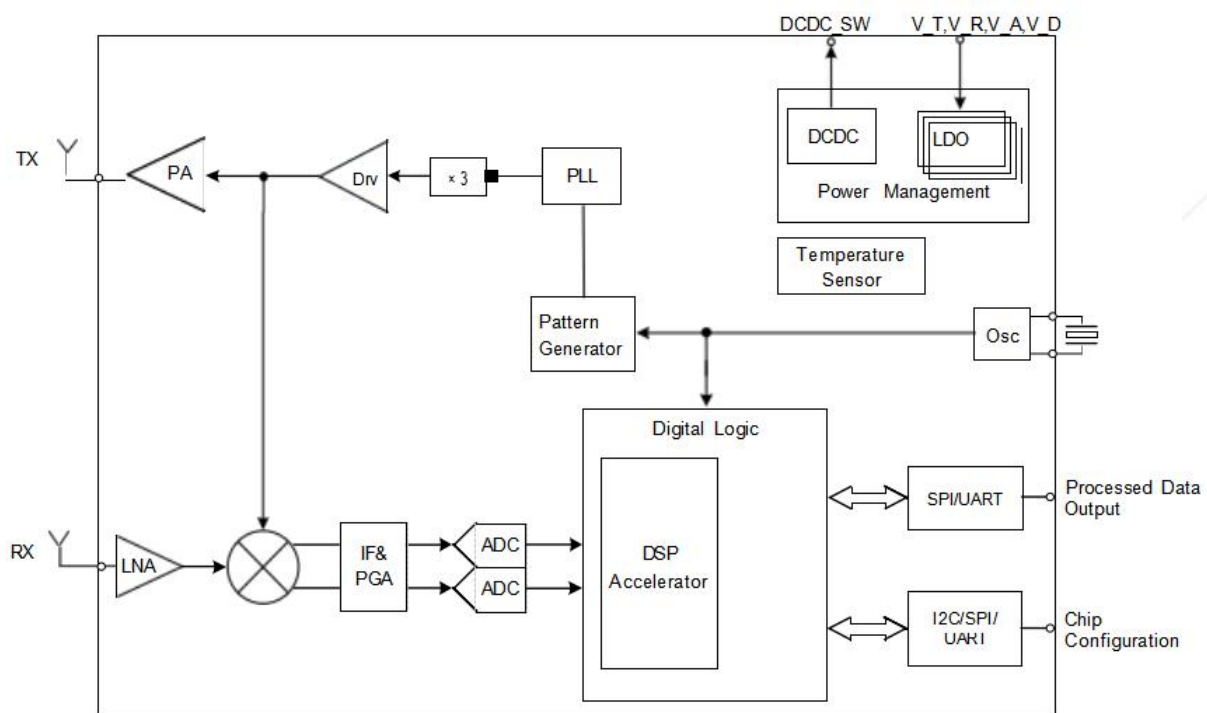


Figure 1 S1KM0000 chip architecture

1.1. Characteristic

- Use DIP package , standard 2.54mm pin header
- The radar supports 24GHz ISM band
- The radar antenna supports 1 receive and 1 transmit, with narrow antenna beam, high resolution, wide frequency band and strong anti-interference ability.
- The maximum sensing distance of the radar is up to 8 meters
- The radar has a large detection angle and a coverage range of up to ± 60 degrees
- radar range, support sensing range division, and shield interference outside the range
- Ultra-small module size: 35 * 7 mm, plug and play, real-time reporting of detection results
- The radar can be intelligently adjusted through the serial port , which is convenient and fast.
- Supports multiple installation methods such as ceiling hanging and wall hanging
- Support automatic generation of detection thresholds
- Support UART
- 3.3V/5V power supply, supports 3.0~3.6V/4.5~5.5V wide voltage range; default 3.3V power supply version
- Typical application scenarios
 - ✓ Human body sensor light control
 - ✓ Human body induction wake-up for advertising screens and other equipment
 - ✓ Life safety protection
 - ✓ Smart Home Appliances
 - ✓ Smart Security
 - ✓ Smart lighting
 - ✓ New energy charging/parking monitoring facilities

2. Main parameters

Table 1 Description of main parameters

Model	Rd-03H
Package	DIP-5
Size	35.0*7.0(±0.2)mm
Antenna type	Onboard antenna
Frequency range	24G ~ 24.25G Hz
Operating temperature	-40°C ~ 85°C
Storage environment	-40°C ~ 125°C, < 90%RH
Power supply range	Supply voltage 3.0 V ~ 3.6 V, supply current ≥ 200 mA
Supported interfaces	UART
Serial port rate	Default 115200 bps

2.1. Electrostatic Requirements

Rd-03H is an electrostatically sensitive device and requires special precautions when handling .



Figure 2 ESD anti-static diagram

2.2. Electrical Characteristics

Table 2 Electrical characteristics

Parameter		Condition	Min. value	Typical Value	Max. value	Unit
Supply voltage		VDD	3.0	3.3	3.6	V
I/O	VIL	-	0	-	0.8	V
	V I H	-	2.3	-	VDD	V
	VOL	-	0	-	0.45	V
	VOH	-	2.45	-	VDD	V

2.3. Radar sensing distance

Table 3 Radar sensing distance

Installation	Min. value	Typical Value	Max. value	Unit
Wall mounting method ($\pm 60^\circ$ range)	-	8	-	meters
Ceiling hanging method (3m hanging height), circular projection radius	-	5	-	meters

Notice:

- The above sensing distance is based on the measurement of open space in Ai-Thinker and is for reference only.
- The radar sensing distance is greatly affected by the surrounding walls, ceilings, large objects, and installation methods. The specific data shall be based on the actual measurement of the installation environment.

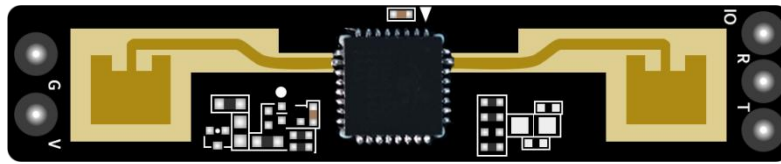
2.4. Power consumption

The following power consumption data is based on a 3.3 V power supply and an ambient temperature of 25°C .

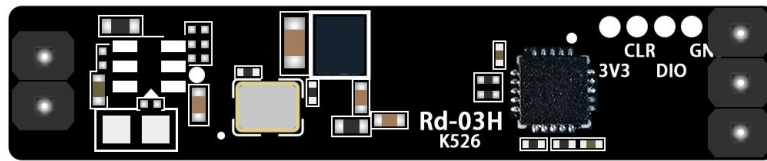
Table 4 Power consumption

Mode	Min. value	Average value	Max. value	Unit
Working status	-	50	-	mA

3. Dimensions



Front



Back

Figure 3 Appearance (rendering is for reference only, the actual product shall prevail)

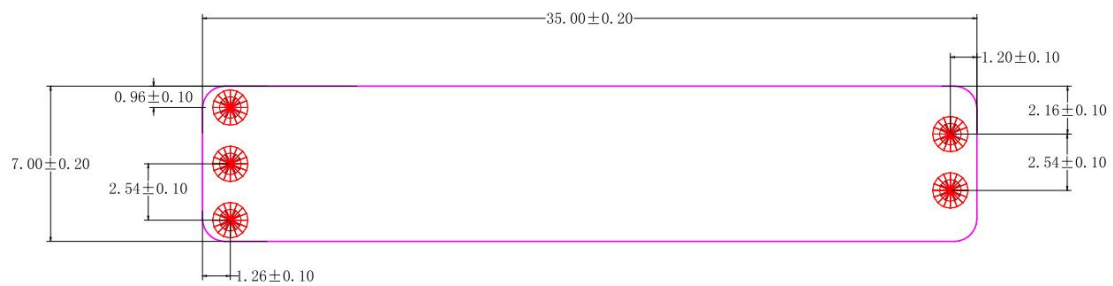


Figure 4 Dimensions (unit: mm)

4. Pin definition

The Rd-03H module has a total of 5 pins , as shown in the pin diagram. The pin function definition table is the interface definition.

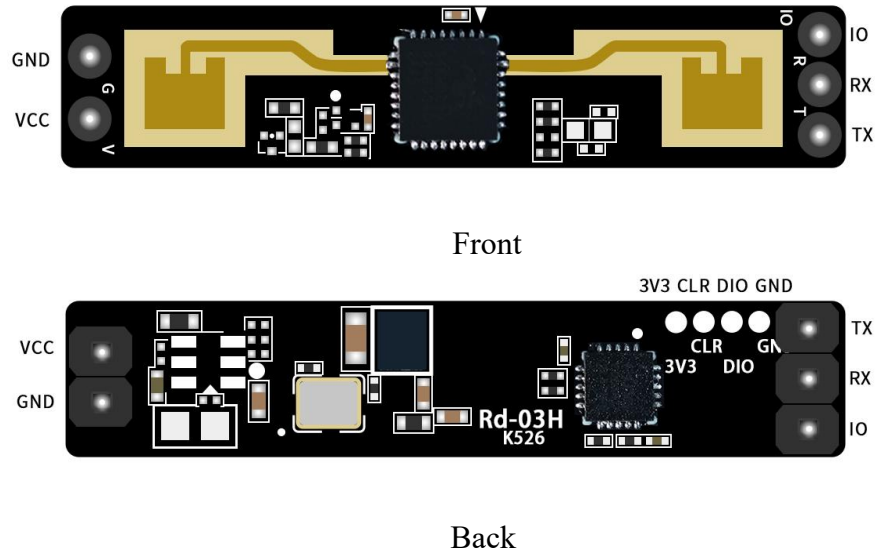
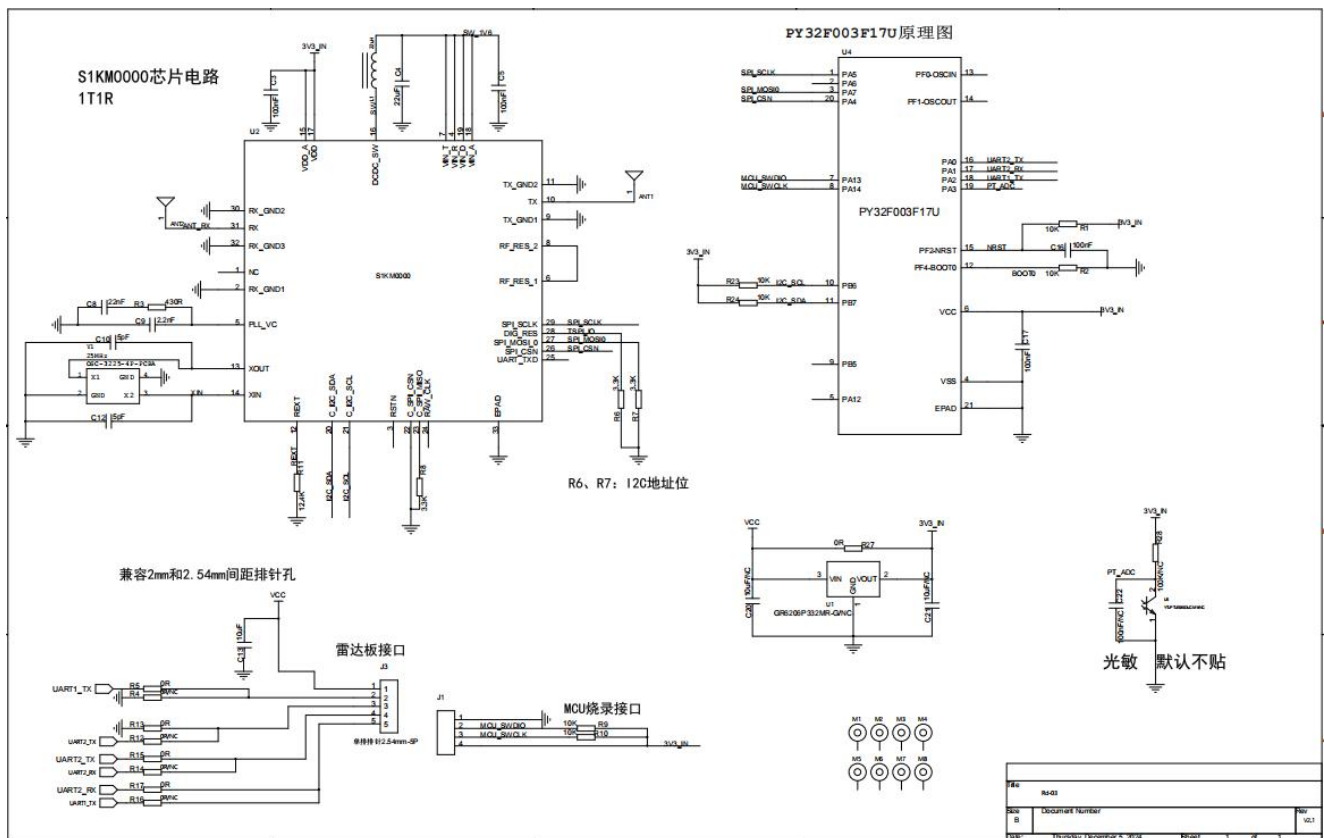


Figure 5 Pin Diagram

Table 5 Pin function definition table

Foot	Name	Functional Description
1	VCC	Input Power
2	GND	Ground
3	TX	UART_TX
4	RX	UART_RX
5	IO	Test result output

5. Schematic



6. Design guidance

6.1. Application guide circuit

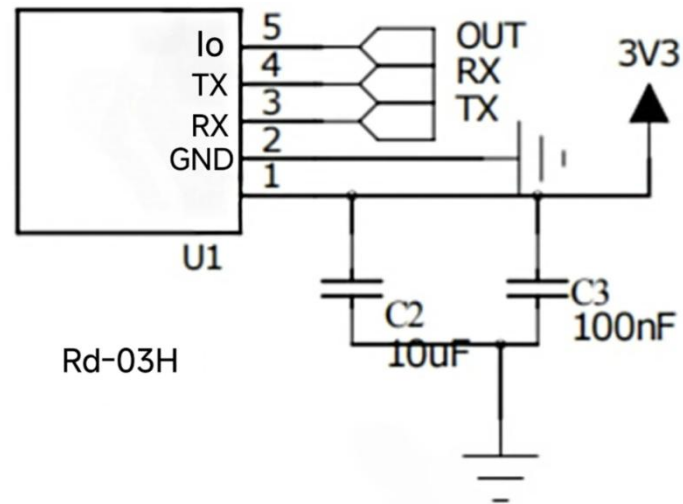


Figure 7 Application guidance circuit

6.2. Radar installation notes

- Installation methods are recommended for the mainboard installation location :
- ✓ Try to ensure that the radar antenna is facing the area to be detected and that there is open space around the antenna without any obstruction .
- ✓ It is necessary to ensure that the radar is installed firmly and stably; the shaking of the radar itself will affect the detection effect .
- ✓ Make sure that there is no object moving or vibrating behind the radar. Since radar waves are penetrating, the antenna signal backlobe may detect moving objects behind the radar. A metal shield or metal back plate can be used to shield the radar backlobe and reduce the impact of objects behind the radar .
- ✓ Due to differences in target size, status, RCS, etc., the target distance accuracy will fluctuate ; at the same time, the maximum distance will also fluctuate slightly .
- ✓ When there are multiple 24GHz radars, please avoid direct beam alignment and install them as far away as possible to avoid possible mutual interference.
- To ensure the performance of the onboard antenna, metal parts must not be placed around the antenna and must be kept away from high-frequency devices.
- The power input voltage range is 3.0V-3.6V, and the power ripple is required to be within 100kHz without obvious frequency peaks. Users need to consider the corresponding electromagnetic compatibility design such as ESD and lightning surge.

6.3. Installation environment requirements

This product needs to be installed in a suitable environment. If used in the following environment, the detection effect will be affected:

- There are non-human objects that are in continuous motion within the sensing area, such as animals, continuously swinging curtains, large green plants facing the air outlet , etc.
- There are large-area strong reflectors in the sensing area, and strong reflectors facing the radar antenna will cause interference .
- When wall-mounted, external interference factors such as air conditioners and electric fans on the ceiling of the room need to be considered .

6.4. Installation and sensing range

■ Ceiling installation method

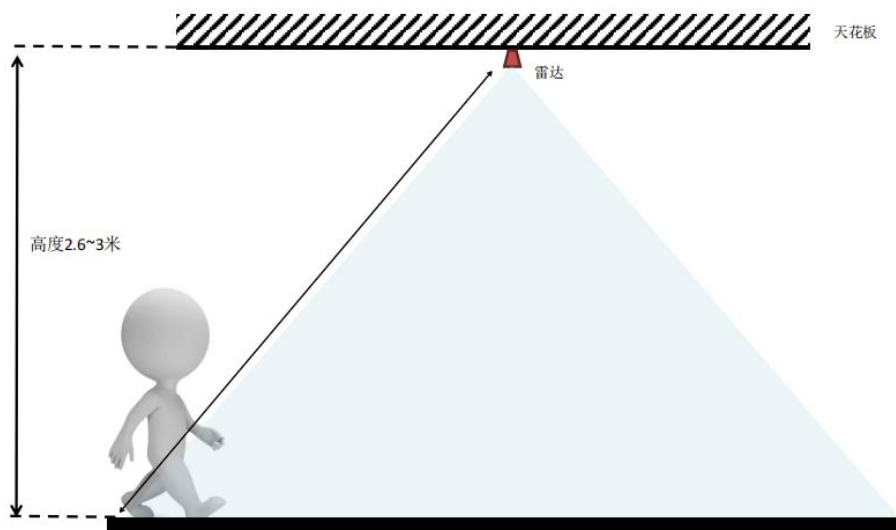


Figure 8 Schematic diagram of ceiling installation

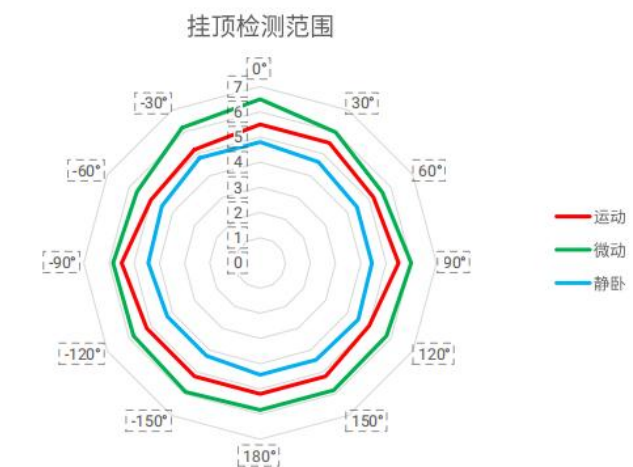


Figure 9 Ceiling radar chart

■ Wall mounting method

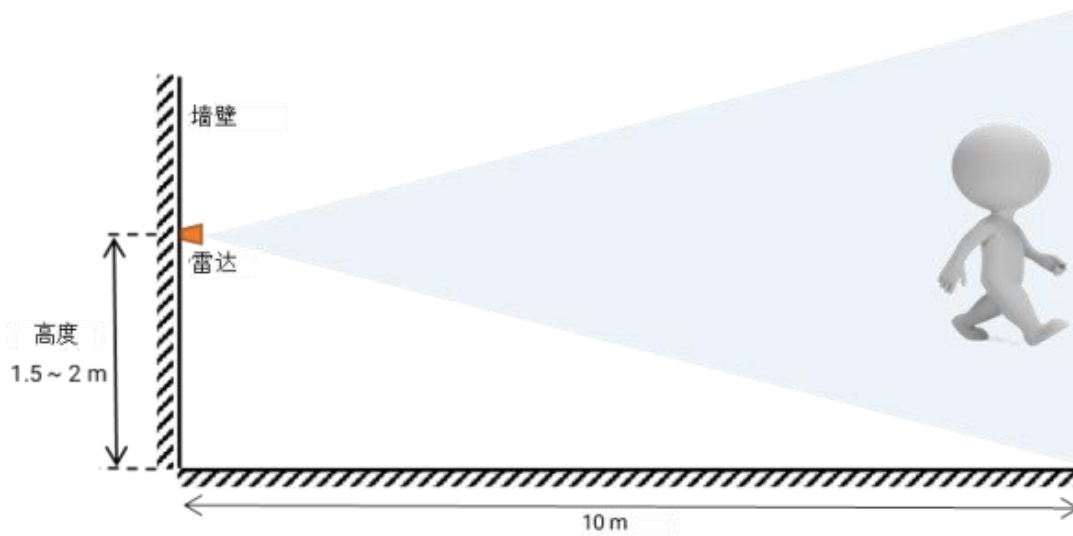


Figure 10 Schematic diagram of wall- mounted installation

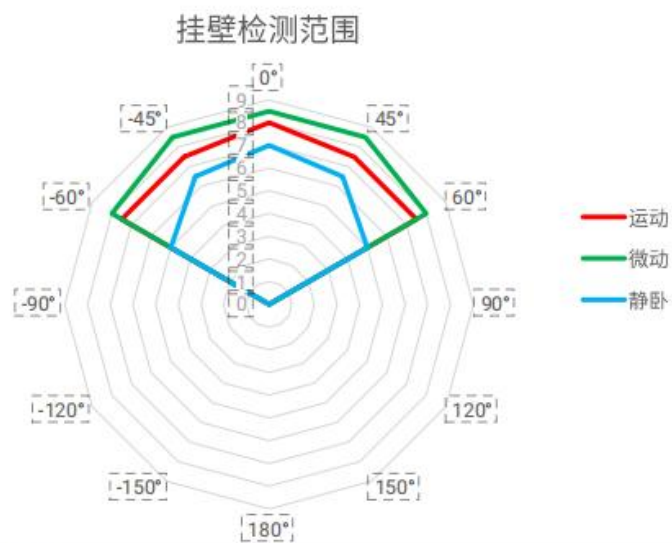


Figure 11 Wall-mounted radar chart

6.5. Power supply

- The recommended voltage is 3.3V and the peak current is above 200mA .
- It is recommended to use LDO power supply; if DC-DC is used, it is recommended to control the ripple within 30mV.
- It is recommended to reserve space for dynamic response capacitors in the DC-DC power supply circuit to optimize the output ripple when the load changes greatly.
- It is recommended to add ESD devices to the 3.3V power interface.

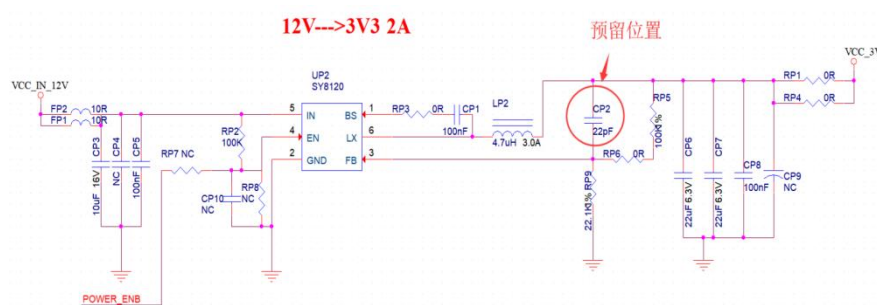


Figure 12 DC-DC buck circuit diagram

6.6. GPIO

- Some IO ports are connected to the module. If you need to use them, it is recommended to connect a 10-100 ohm resistor in series to the IO ports. This can suppress overshoot and make the levels on both sides more stable. It is helpful for EMI and ESD.
- For the pull-up and pull-down of special IO ports, please refer to the instructions in the specification, which will affect the startup configuration of the module.
- The IO port of the module is 3.3V. If the IO port levels of the main control and the module do not match, a level conversion circuit needs to be added.
- If the IO port is directly connected to a peripheral interface, or a terminal such as a pin header, it is recommended to reserve ESD devices near the terminals in the IO port routing.

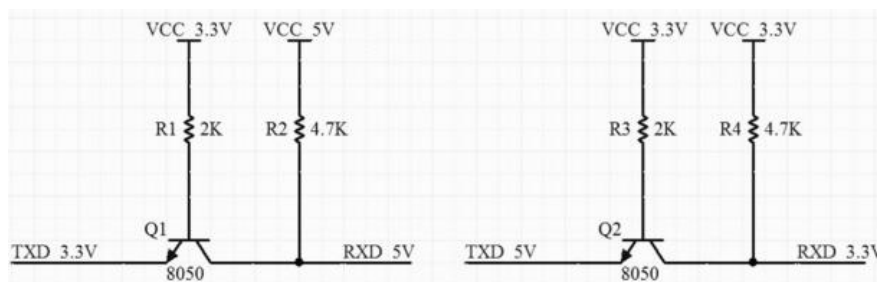


Figure 13 Level conversion circuit

7. Storage conditions

Products sealed in moisture-proof bags should be stored in a non-condensing atmosphere of $<40^{\circ}\text{C}/90\%\text{RH}$.

The module's moisture sensitivity level MSL is level 3.

After the vacuum bag is unsealed, it must be used within 168 hours at $25\pm 5^{\circ}\text{C}/60\%\text{RH}$, otherwise it needs to be baked before it can be put online again.

8. Reflow soldering curve

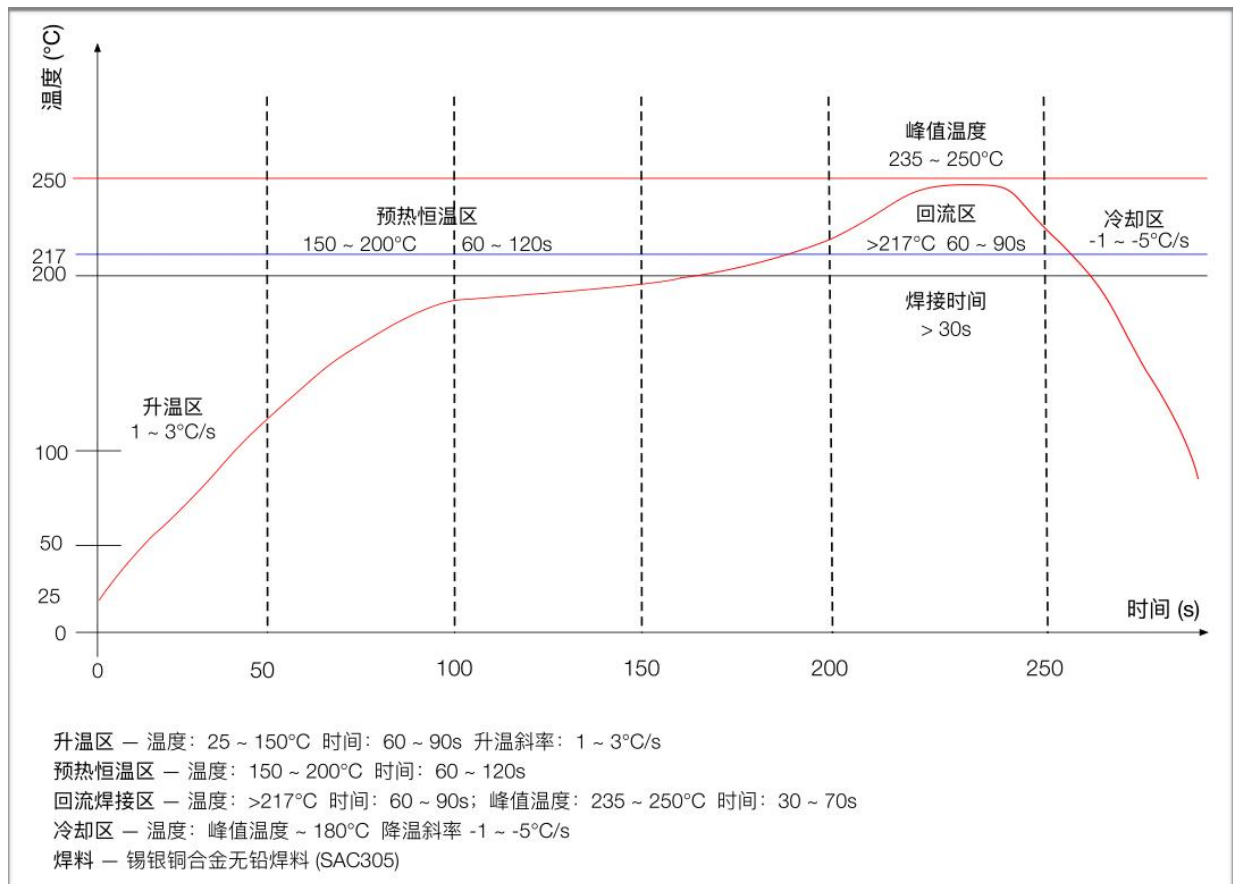


Figure 14 Reflow soldering curve

9. Product packaging information

Rd-03H module is packed in tape, 200 pcs/reel. As shown in the following figure:



Figure 15 Packaging Taping Diagram

10. Contact us

[Ai-Thinker official website](#)

[Office forum](#)

[Develop DOCS](#)

[LinkedIn](#)

[Tmall shop](#)

[Taobao shop](#)

[Alibaba shop](#)

[Technical support email: support@aithinker.com](mailto:support@aithinker.com)

[Domestic business cooperation: sales@aithinker.com](mailto:sales@aithinker.com)

[Overseas business cooperation: overseas@aithinker.com](mailto:overseas@aithinker.com)

Company Address: Room 403-405, 408-410, Block C, Huafeng Smart Innovation Port, Gushu 2nd Road, Xixiang, Baoan District, Shenzhen.

Tel: +86-0755-29162996



WeChat mini program



WeChat official account

Disclaimer and Copyright Notice

The information in this document, including the URL address for reference, is subject to change without notice.

The document is provided "as is" without any warranty, including any warranty of merchantability, fitness for a particular purpose or non-infringement, and any warranty mentioned elsewhere in any proposal, specification or sample. This document does not assume any liability, including liability for infringement of any patent rights arising from the use of the information in this document. This document does not grant any intellectual property rights license, whether express or implied, by estoppel or otherwise.

The test data obtained in this article are all obtained by Ai-Thinker Laboratory, and the actual results may vary slightly.

All trade names, trademarks and registered trademarks mentioned in this article are the property of their respective owners and are hereby declared.

The final right of interpretation belongs to Shenzhen Ai-Thinker Technology Co., Ltd.

Notice

The contents of this manual may be changed due to product version upgrades or other reasons.

Shenzhen Ai-Thinker Technology Co., Ltd. reserves the right to modify the contents of this manual without any notice or reminder.

This manual is only used as a guide. Shenzhen Ai-Thinker Technology Co., Ltd. tries its best to provide accurate information in this manual, but Shenzhen Ai-Thinker Technology Co., Ltd. does not ensure that the contents of the manual are completely error-free, and all statements, information and suggestions in this manual do not constitute any express or implied warranty.

Important statement

Ai-Thinker may provide technical and reliability data "as is" (including data sheets), design resources (including design for reference purposes), application or other design recommendations, network tools, security information and other resources (the "these resources") and without warranty without express or implied warranty, including without limitation, adaptability for a particular purpose or infringement of intellectual property rights of any third party. And specifically declares that it is not liable for any inevitable or incidental losses arising from the application or the use of any company products and circuits.

Ai-Thinker reserves the right to the information released in this document (including but not limited to the indicators and product description) and any changes to the Company without notice to automatically replace and replace all the information provided in the previous version of the same document number document.

These resources are available to skilled developers who design Essence products. You will assume all responsibilities for the following: (1) select the appropriate optional products for your application; (2) design, verify, and run your application and products during the full life cycle; and (3) ensure that your application meets all corresponding standards, norms and laws, and any other functional.

Ai-Thinker authorizes you to use these resources only for the application of the Ai-Thinker products described in this resource. Without the permission of Ai-Thinker, no unit or individual shall copy or copy part or all of these resources without authorization, and shall not spread them in any form. You are not entitled to use any other Principal or any third party intellectual property. You shall fully indemnify you for any claims, damages, costs, losses and debts incurred by the result of the use of these resources.

The products available by Ai-Thinker are subject to the terms of sales or other applicable terms attached to the products. Ai-Thinker may provide these resources does not extend or otherwise change the applicable warranty or warranty disclaimer for the product release.