

# Preface

---

## I. Software and Hardware Preparation

---

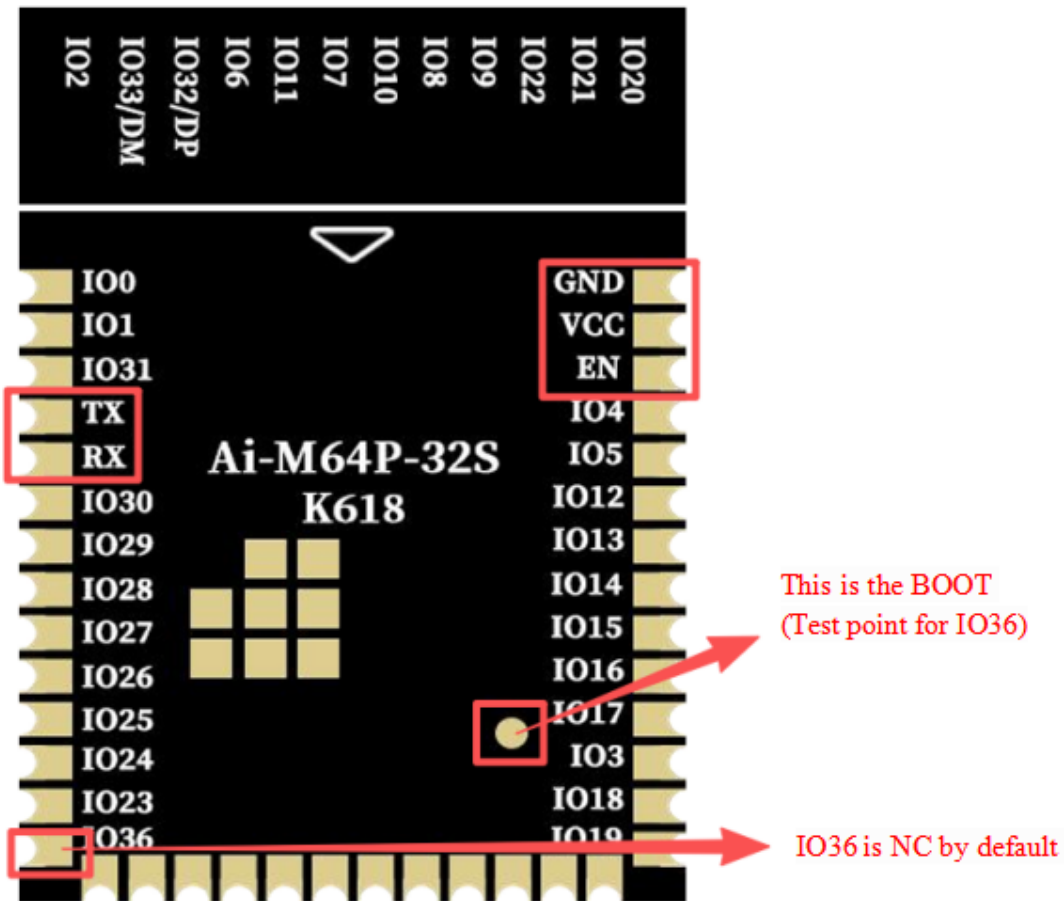
1. One Ai-M64 series module or development board
2. Ai-M64 flashing software: [Click to download](#)
3. For module flashing: one USB-to-TTL serial adapter
4. For development board flashing: one Type-C cable

## II. Hardware Wiring

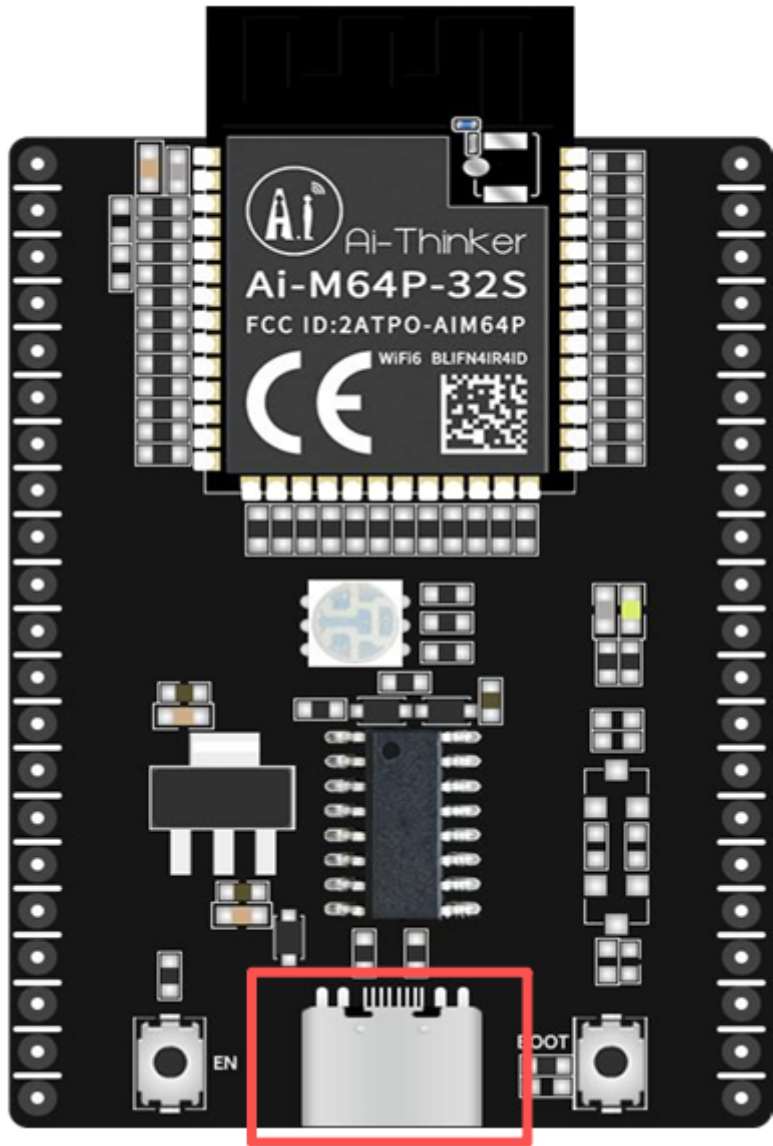
---

**Taking the Ai-M64P-32S module as an example, connect the wires according to the table below.** Other modules are similar.

USB-to-TTL	Ai-M64P-32S
VCC (Vo)	VCC (VDD)
GND	GND
TXD	RXD
RXD	TXD
DTR	IO36 (round dot on the back of the module)
RTS	EN

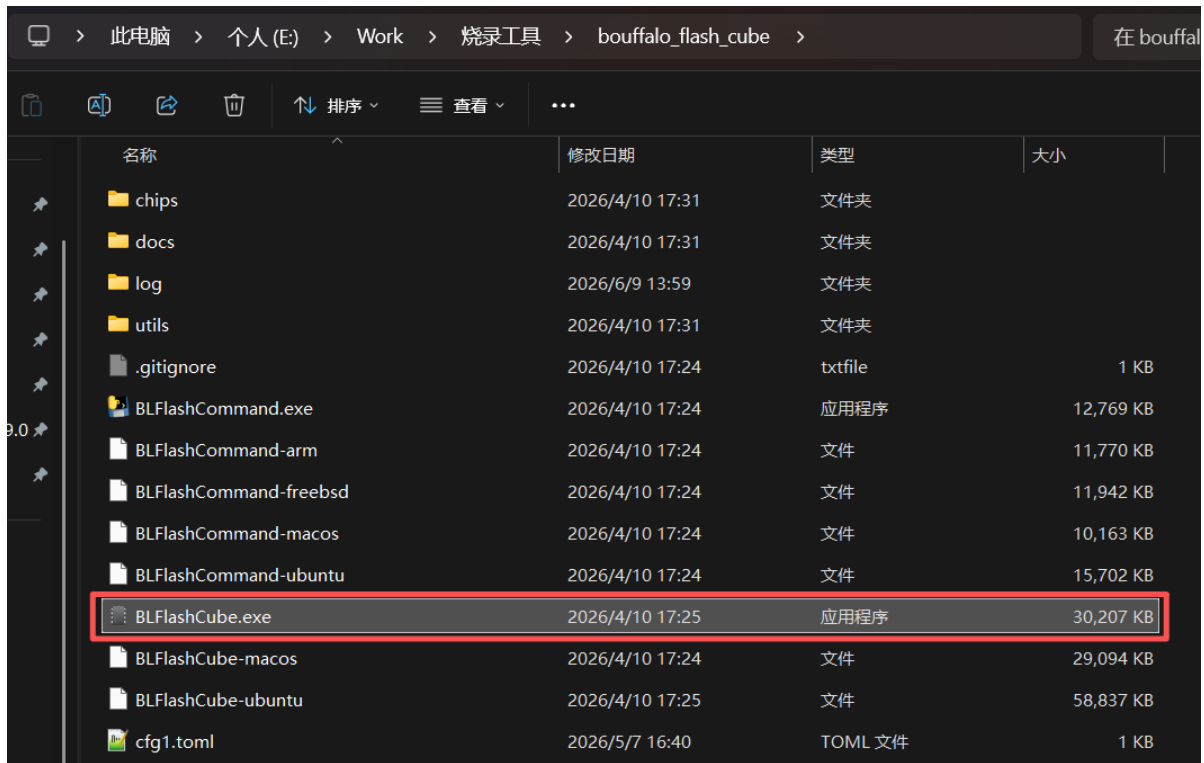


For the Ai-M64P-32S development board, connect the Type-C cable.



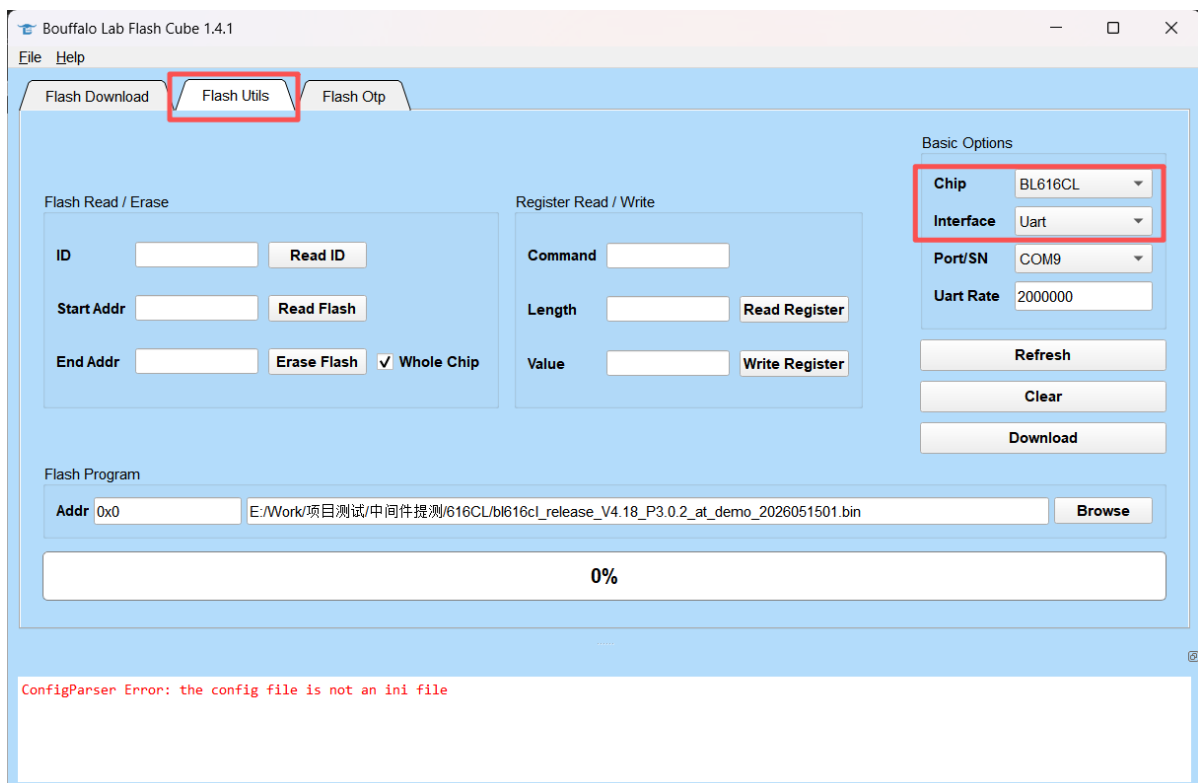
# III. Usage of Flashing Software

## 1. Double-click the BLFlashCube.exe software, as shown below.



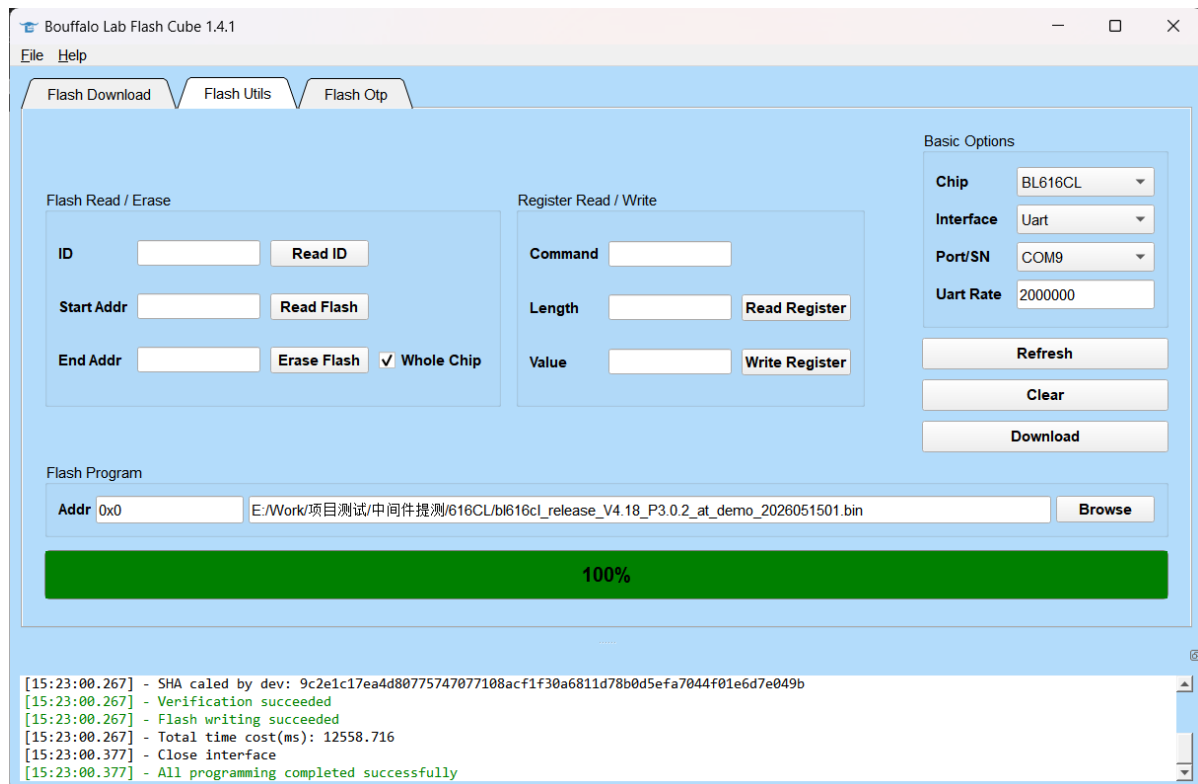
## 2. Select the Flash Utils tab. On the right side, select BL616CL for Chip and Uart for Interface.

If using the CP2102 purchased from the Ai-Thinker Taobao store, select a baud rate of 921600. If using the FT232 chip, you can select 2000000. The serial chip on the development board is 340C, and 2000000 can also be selected.





## 5. When "All Success" appears, flashing is complete.



## 6. Common Errors and Solutions

Some error codes are as follows:

### 0050 — Failed to enter flashing mode

Check the wiring again to confirm whether IO36 (round dot) and EN are connected. For the method of entering flashing mode on the development board, refer to Step 4.

### 0023 — Clock verification error; lower the baud rate

## Contact Us

This is the end of this guide. The purpose is to help everyone quickly get started with the development of the new product solution. More materials can be obtained from our official website.

Official Website: <https://www.ai-thinker.com>

Development DOCS: <https://docs.ai-thinker.com/>

Official Forum: <http://bbs.ai-thinker.com>

Technical Support: [support@aithinker.com](mailto:support@aithinker.com)